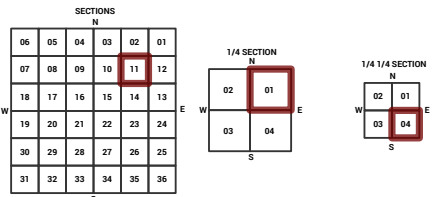


MARICOPA COUNTY
STATE OF ARIZONA

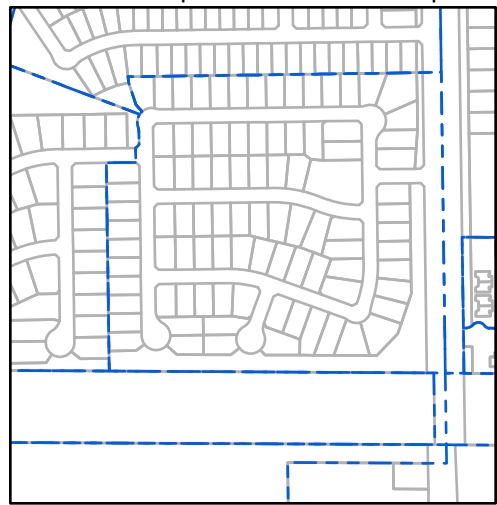
PT. SECTION 11 T01S R07E

856 - 11 - 01 - 04

TOWNSHIP & RANGE SECTION 1/4 SECTION 1/4 SECTION



Parcels updated within this map



MARICOPA COUNTY
ASSESSOR'S OFFICE
301 W. Jefferson Street
Phoenix, AZ 85003



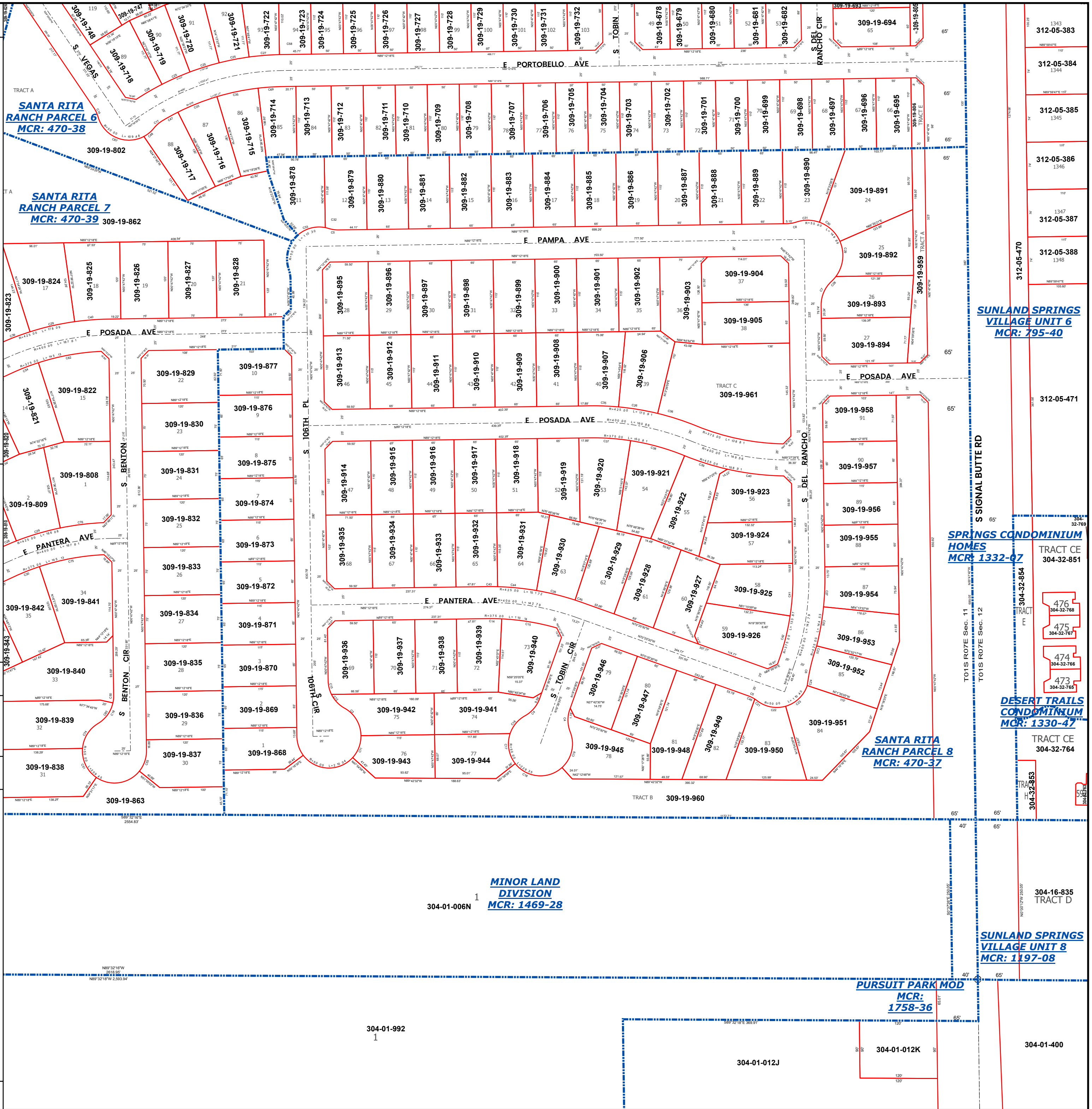
LEGEND: Tax Parcels Sections Subdivisions
Lots Section Corners Centerlines

Disclaimer - Indemnification
CAUTION! USERS SHOULD INDEPENDENTLY RESEARCH AND VERIFY
INFORMATION WITHIN THIS DATASET OR MAP BEFORE RELYING ON IT.

The Assessor's Office has compiled information within this dataset or map that it uses to identify, classify, and value real and personal property. Please contact the Assessor's Office at 602 506-3406 if you believe any information is incomplete, out of date, or incorrect so that appropriate corrections can be addressed. Please note that a statutory process is also available to correct errors pursuant to Arizona Revised Statutes 42-16254.

The Assessor does not guarantee that any information contained within this dataset or map is accurate, complete or current. In many instances, the Assessor has gathered information from independent sources and made it available within this dataset or map, and the original information may have contained errors and omissions. Errors and omissions may have occurred in the process of gathering, interpreting, and reporting the information. Information within this dataset or map is not updated "real time." In addition, Users are cautioned that the process used within this dataset or map to illustrate the boundaries of adjacent parcels is not always consistent with the recorded documents for such parcels. The parcel boundaries depicted within this dataset or maps are for illustrative purposes only, and the exact relationship of adjacent parcels should be independently researched and verified. The information provided within this dataset or map is not the equivalent of a title report or a real estate survey. Users should independently research, investigate, and verify all information before relying on it or using it in the preparation of legal documents.

Map Reprint Date: 2/27/2026



MINOR LAND DIVISION
MCR: 1469-28
304-01-006N 1

PURSUIT PARK MOD
MCR: 1758-36

SUNLAND SPRINGS VILLAGE UNIT 6
MCR: 795-40

SPRINGS CONDOMINIUM HOMES
MCR: 1332-07

DESERT TRAILS CONDOMINIUM
MCR: 1330-47

SANTA RITA RANCH PARCEL 8
MCR: 470-37

SUNLAND SPRINGS VILLAGE UNIT 8
MCR: 1197-08

312-05-383

312-05-384

312-05-385

312-05-386

312-05-387

312-05-388

312-05-470

312-05-388

312-05-471

TRACT CE 304-32-851

476 304-32-768

475 304-32-767

474 304-32-766

473 304-32-765

TRACT CE 304-32-764

304-16-835 TRACT D

304-01-400