

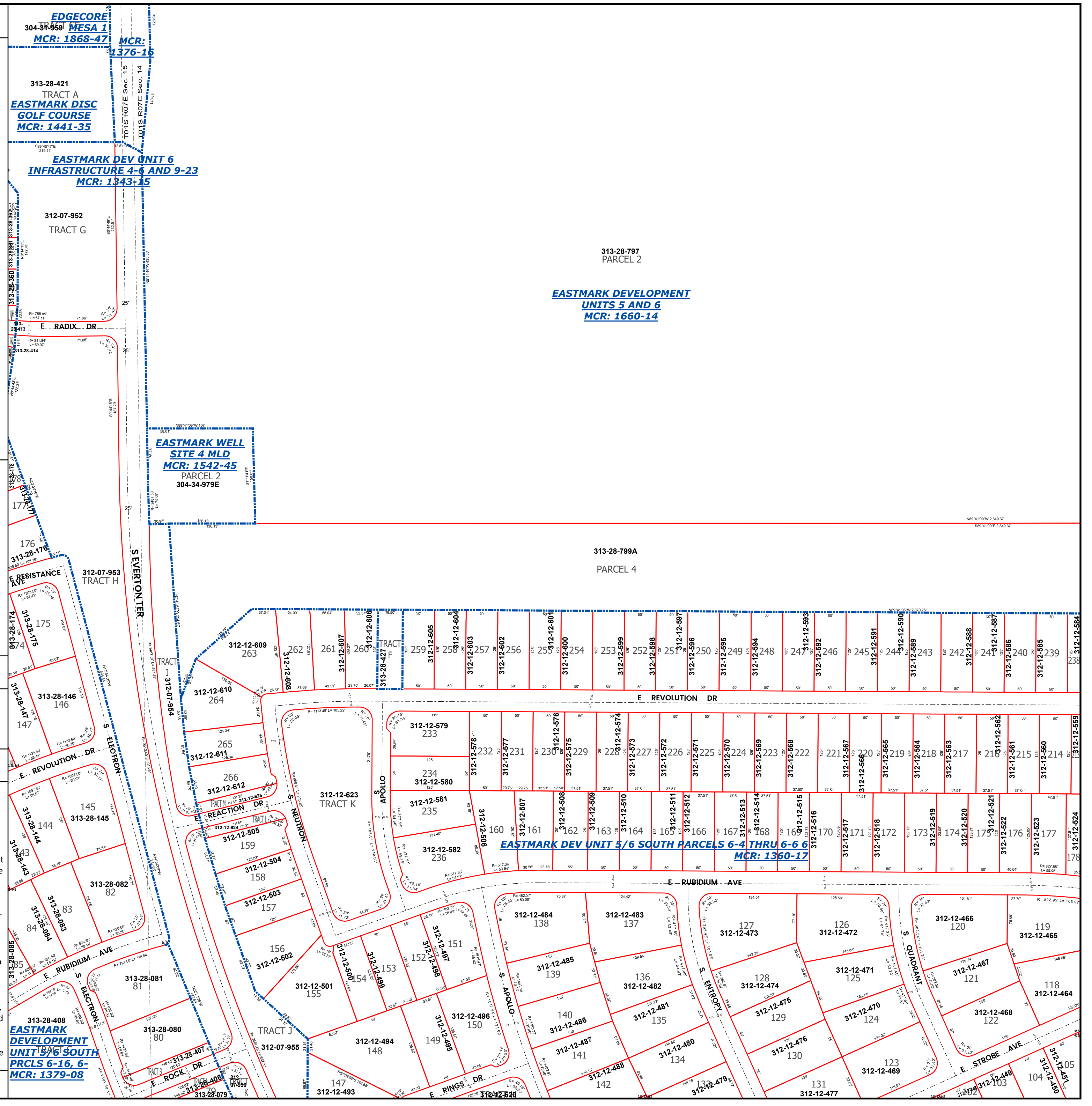
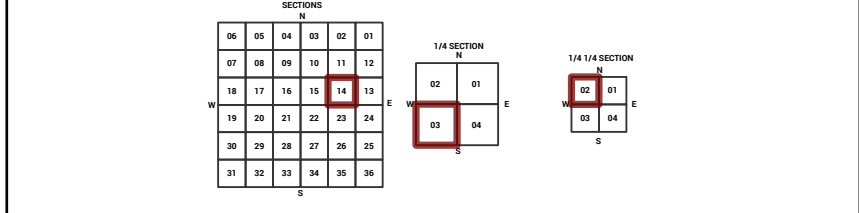
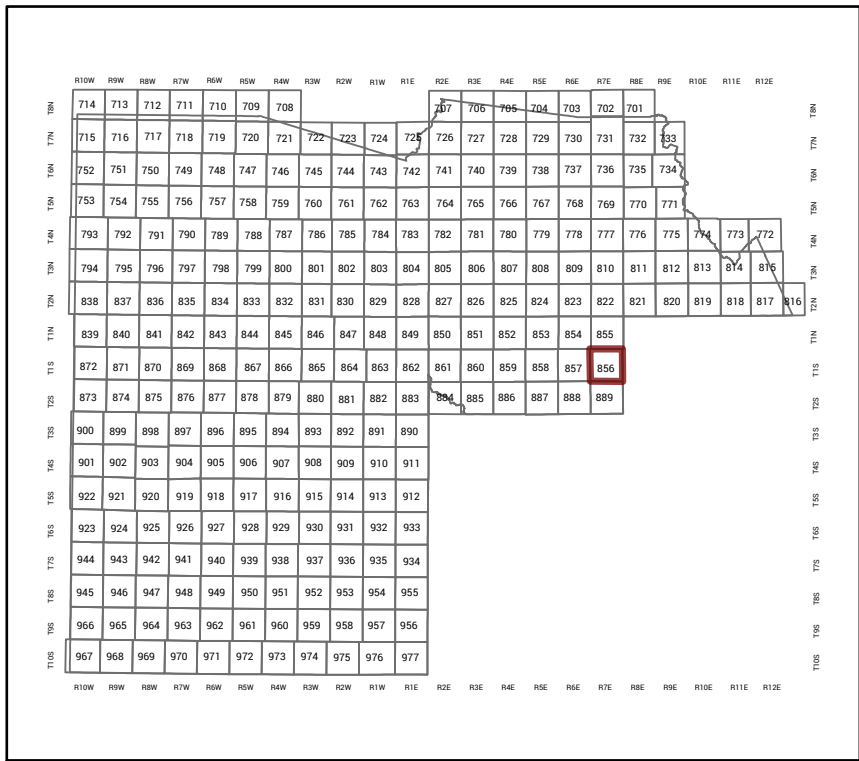
# MARICOPA COUNTY

STATE OF ARIZONA

PT. SECTION 14 T01S R07E

## 856 - 14 - 03 - 02

TOWNSHIP & RANGE SECTION 1/4 SECTION 1/4 1/4 SECTION



**EDGECORE TRACT MESA 1**  
MCR: 1868-47

313-28-421  
TRACT A  
**EASTMARK DISC GOLF COURSE**  
MCR: 1441-35

**EASTMARK DEV UNIT 6 INFRASTRUCTURE 4-6 AND 9-23**  
MCR: 1343-15

312-07-952  
TRACT G

313-28-797  
PARCEL 2

**EASTMARK DEVELOPMENT UNITS 5 AND 6**  
MCR: 1660-14

**EASTMARK WELL SITE 4 MLD**  
MCR: 1542-45  
PARCEL 2  
304-34-979E

312-07-953  
TRACT H

313-28-799A  
PARCEL 4

313-28-146  
146

312-12-609  
263

312-12-607  
261

312-12-606  
260

312-12-605  
259

312-12-604  
258

312-12-603  
257

312-12-602  
256

312-12-601  
255

312-12-600  
254

312-12-599  
253

313-28-147  
147

312-12-610  
264

312-12-608  
262

312-12-607  
261

312-12-606  
260

312-12-605  
259

312-12-604  
258

312-12-603  
257

312-12-602  
256

312-12-601  
255

312-12-599  
253

313-28-148  
148

312-12-611  
265

312-12-609  
263

312-12-607  
261

312-12-606  
260

312-12-605  
259

312-12-604  
258

312-12-603  
257

312-12-602  
256

312-12-601  
255

312-12-599  
253

313-28-149  
149

312-12-612  
266

312-12-610  
264

312-12-608  
262

312-12-607  
261

312-12-606  
260

312-12-605  
259

312-12-604  
258

312-12-603  
257

312-12-602  
256

312-12-601  
255

313-28-150  
150

312-12-613  
267

312-12-611  
265

312-12-609  
263

312-12-607  
261

312-12-606  
260

312-12-605  
259

312-12-604  
258

312-12-603  
257

312-12-602  
256

312-12-601  
255

313-28-151  
151

312-12-614  
268

312-12-612  
266

312-12-610  
264

312-12-608  
262

312-12-607  
261

312-12-606  
260

312-12-605  
259

312-12-604  
258

312-12-603  
257

312-12-602  
256

313-28-152  
152

312-12-615  
269

312-12-613  
267

312-12-611  
265

312-12-609  
263

312-12-607  
261

312-12-606  
260

312-12-605  
259

312-12-604  
258

312-12-603  
257

312-12-602  
256

313-28-153  
153

312-12-616  
270

312-12-614  
268

312-12-612  
266

312-12-610  
264

312-12-608  
262

312-12-607  
261

312-12-606  
260

312-12-605  
259

312-12-604  
258

312-12-603  
257

313-28-154  
154

312-12-617  
271

312-12-615  
269

312-12-613  
267

312-12-611  
265

312-12-609  
263

312-12-607  
261

312-12-606  
260

312-12-605  
259

312-12-604  
258

312-12-603  
257

MARICOPA COUNTY ASSESSOR'S OFFICE  
301 W. Jefferson Street  
Phoenix, AZ 85003  
**MARICOPA COUNTY**  
ASSESSOR'S OFFICE  
<https://mcaassessor.maricopa.gov>

**LEGEND:** Tax Parcels Sections Subdivisions  
Lots Section Corners Centerlines

Disclaimer - Indemnification  
CAUTION! USERS SHOULD INDEPENDENTLY RESEARCH AND VERIFY INFORMATION WITHIN THIS DATASET OR MAP BEFORE RELYING ON IT.

The Assessor's Office has compiled information within this dataset or map that it uses to identify, classify, and value real and personal property. Please contact the Assessor's Office at 602 506-3406 if you believe any information is incomplete, out of date, or incorrect so that appropriate corrections can be addressed. Please note that a statutory process is also available to correct errors pursuant to Arizona Revised Statutes 42-16254.

The Assessor does not guarantee that any information contained within this dataset or map is accurate, complete or current. In many instances, the Assessor has gathered information from independent sources and made it available within this dataset or map, and the original information may have contained errors and omissions. Errors and omissions may have occurred in the process of gathering, interpreting, and reporting the information. Information within this dataset or map is not updated "real time." In addition, Users are cautioned that the process used within this dataset or map to illustrate the boundaries of adjacent parcels is not always consistent with the recorded documents for such parcels. The parcel boundaries depicted within this dataset or maps are for illustrative purposes only, and the exact relationship of adjacent parcels should be independently researched and verified. The information provided within this dataset or map is not the equivalent of a title report or a real estate survey. Users should independently research, investigate, and verify all information before relying on it or using it in the preparation of legal documents.

Map Reprint Date: 2/27/2026