

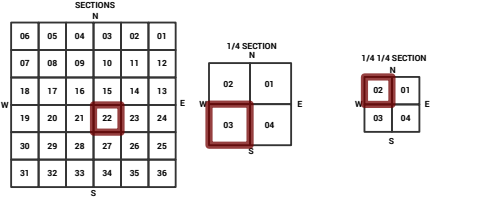
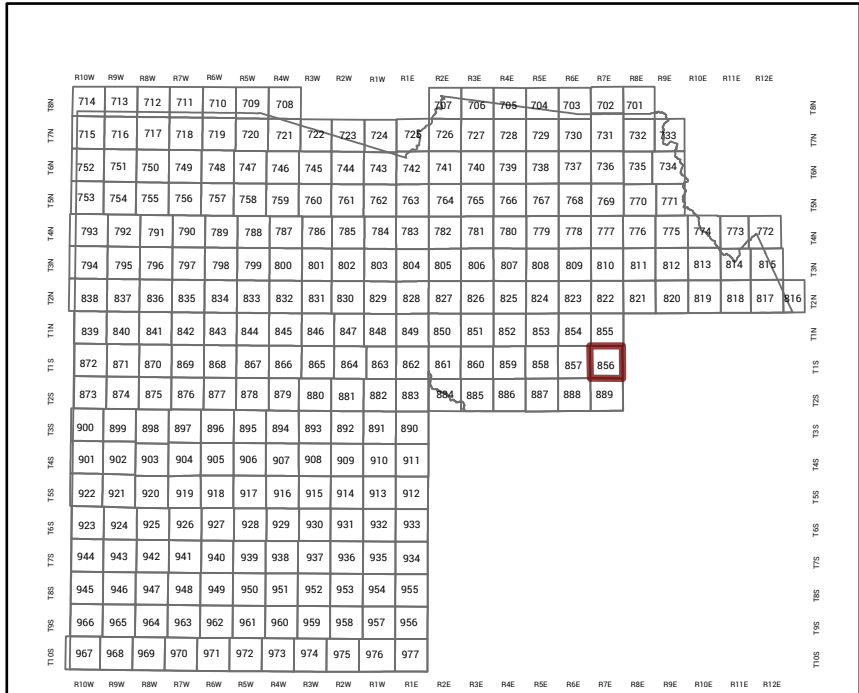
MARICOPA COUNTY

STATE OF ARIZONA

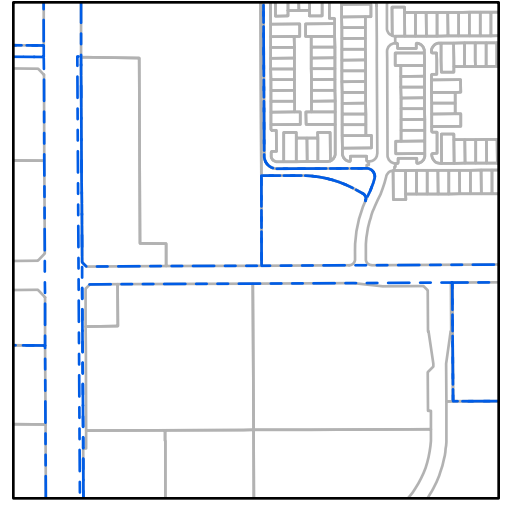
PT. SECTION 22 T01S R07E

856 - 22 - 03 - 02

TOWNSHIP & RANGE SECTION 1/4 SECTION 1/4 1/4 SECTION



Parcels updated within this map



MARICOPA COUNTY ASSESSOR'S OFFICE
301 W. Jefferson Street
Phoenix, AZ 85003
<https://mcaassessor.maricopa.gov>

LEGEND: Tax Parcels, Sections, Subdivisions, Lots, Section Corners, Centerlines

Disclaimer - Indemnification
CAUTION! USERS SHOULD INDEPENDENTLY RESEARCH AND VERIFY INFORMATION WITHIN THIS DATASET OR MAP BEFORE RELYING ON IT.

The Assessor's Office has compiled information within this dataset or map that it uses to identify, classify, and value real and personal property. Please contact the Assessor's Office at 602 506-3406 if you believe any information is incomplete, out of date, or incorrect so that appropriate corrections can be addressed. Please note that a statutory process is also available to correct errors pursuant to Arizona Revised Statutes 42-16254.

The Assessor does not guarantee that any information contained within this dataset or map is accurate, complete or current. In many instances, the Assessor has gathered information from independent sources and made it available within this dataset or map, and the original information may have contained errors and omissions. Errors and omissions may have occurred in the process of gathering, interpreting, and reporting the information. Information within this dataset or map is not updated "real time." In addition, Users are cautioned that the process used within this dataset or map to illustrate the boundaries of adjacent parcels is not always consistent with the recorded documents for such parcels. The parcel boundaries depicted within this dataset or maps are for illustrative purposes only, and the exact relationship of adjacent parcels should be independently researched and verified. The information provided within this dataset or map is not the equivalent of a title report or a real estate survey. Users should independently research, investigate, and verify all information before relying on it or using it in the preparation of legal documents.

Map Reprint Date: 2/27/2026

MESA GATEWAY 202
REPLAT
MCR: 1772-25

6A
304-31-148

MESA GATEWAY 202
MCR: 1702-02

304-31-045A

304-31-045B

VIEW 202
MCR: 1638-11

3
304-31-046

CONFLUENCE AT MESA GATEWAY
MCR: 1787-09

6
304-31-678

304-31-681
9

T01S R07E Sec. 21
T01S R07E Sec. 22

S ELLSWORTH RD

S ELLSWORTH RD

S ELLSWORTH RD

312-17-961
TRACT S
EASTMARK DU 3/4 NORTH PHASE 4
MDR VARIOUS TRACTS REPLAT
MCR: 1547-49

312-17-962
TRACT T

EASTMARK PHASE 1 MOD
MCR: 1117-47

TRACT A
304-32-892

304-32-882
PARCEL A

304-32-884
PARCEL C

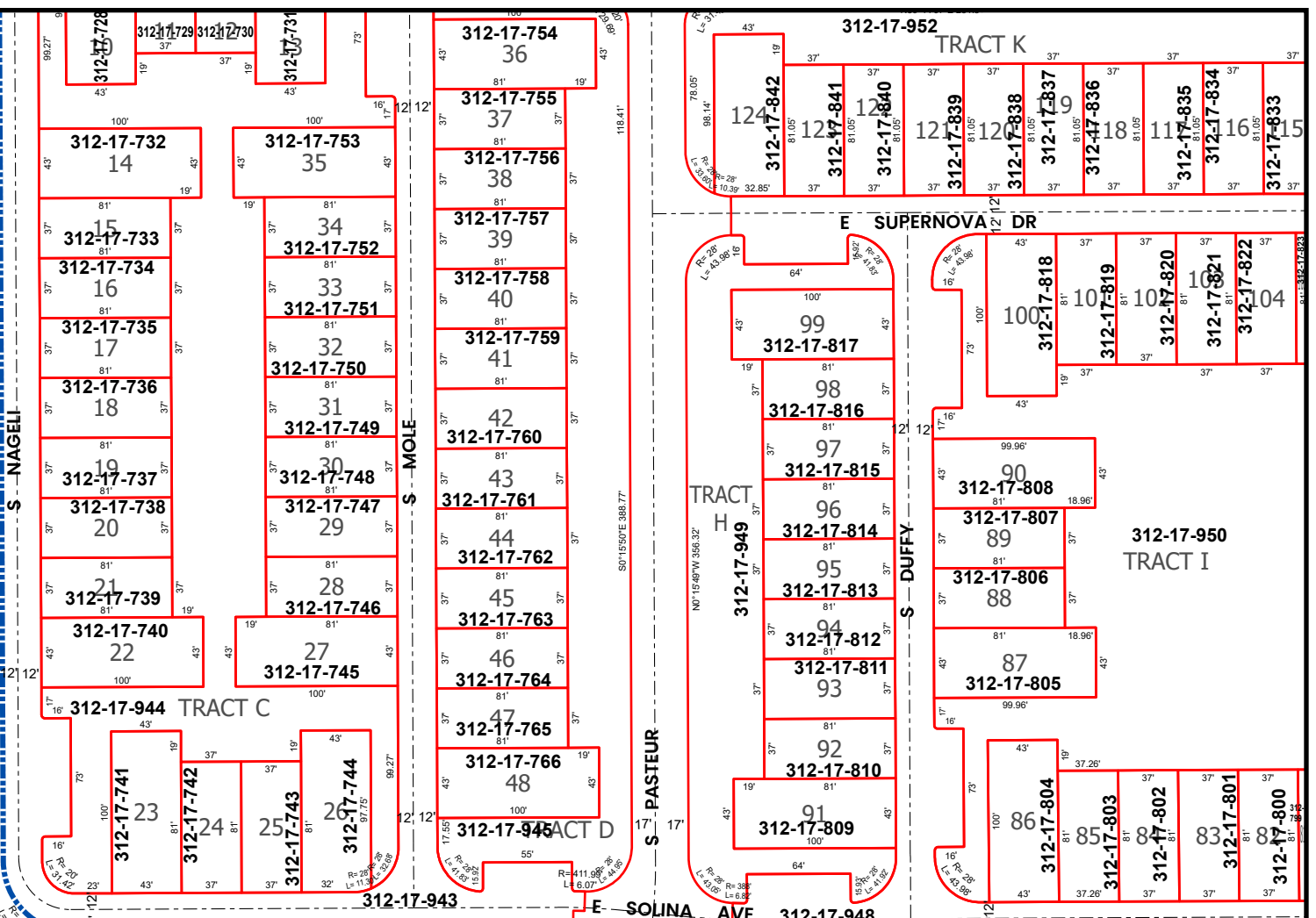
304-32-885
PARCEL D

312-17-957
TRACT P

E POINT TWENTY TWO BLVD

304-32-883
PARCEL B

304-32-889
PARCEL H



EASTMARK DU 3/4 NORTH PHASE 4 MDR
MCR: 1495-36

EASTMARK DEVELOPMENT UNIT 3/4 LOTS 1 THROUGH 4
MCR: 1407-01

EASTMARK COMMERCIAL CORE
MCR: 1552-46

304-32-868

304-32-890A
PARCEL JK