

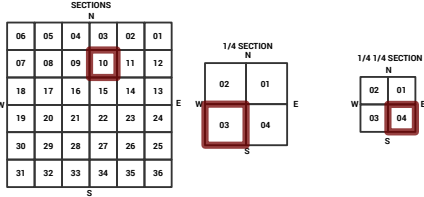
MARICOPA COUNTY
STATE OF ARIZONA

PT. SECTION 10 T01S R05E

858 - 10 - 03 - 04

TOWNSHIP & RANGE SECTION 1/4 SECTION 1/4 1/4 SECTION

Grid of section numbers from 708 to 918.



Parcels updated within this map



MARICOPA COUNTY
ASSESSOR'S OFFICE
301 W. Jefferson Street
Phoenix, AZ 85003



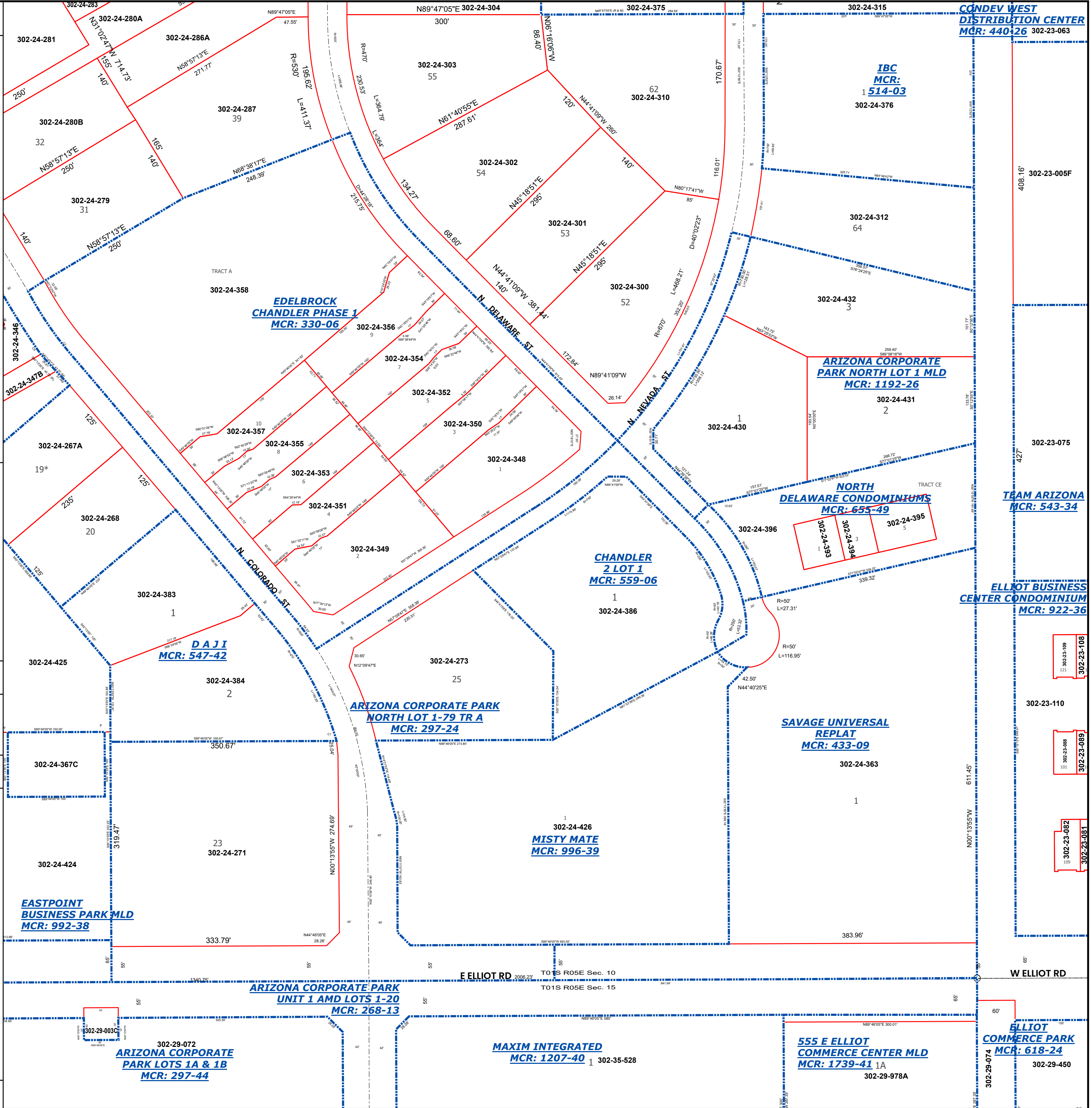
LEGEND: Tax Parcels, Sections, Subdivisions, Lots, Section Corners, Centerlines

Disclaimer - Indemnification
CAUTION! USERS SHOULD INDEPENDENTLY RESEARCH AND VERIFY INFORMATION WITHIN THIS DATASET OR MAP BEFORE RELYING ON IT.

The Assessor's Office has compiled information within this dataset or map that it uses to identify, classify, and value real and personal property. Please contact the Assessor's Office at 602 506-3406 if you believe any information is incomplete, out of date, or incorrect so that appropriate corrections can be addressed. Please note that a statutory process is also available to correct errors pursuant to Arizona Revised Statutes 42-16254.

The Assessor does not guarantee that any information contained within this dataset or map is accurate, complete or current. In many instances, the Assessor has gathered information from independent sources and made it available within this dataset or map, and the original information may have contained errors and omissions. Errors and omissions may have occurred in the process of gathering, interpreting, and reporting the information. Information within this dataset or map is not updated "real time." In addition, Users are cautioned that the process used within this dataset or map to illustrate the boundaries of adjacent parcels is not always consistent with the recorded documents for such parcels. The parcel boundaries depicted within this dataset or maps are for illustrative purposes only, and the exact relationship of adjacent parcels should be independently researched and verified. The information provided within this dataset or map is not the equivalent of a title report or a real estate survey. Users should independently research, investigate, and verify all information before relying on it or using it in the preparation of legal documents.

Map Reprint Date: 2/28/2026



CONDEV WEST DISTRIBUTION CENTER MCR: 440-26 302-23-063
IBC MCR: 514-03 302-24-376
ARIZONA CORPORATE PARK NORTH LOT 1 MLD MCR: 1192-26 302-24-431 2
NORTH DELAWARE CONDOMINIUMS MCR: 655-49 302-24-395 5
TEAM ARIZONA MCR: 543-34
ELLOT BUSINESS CENTER CONDOMINIUM MCR: 922-36 302-23-108 121 302-23-109 121
302-23-110
302-23-088 101 302-23-089 101
302-23-082 103 302-23-081 103
SAVAGE UNIVERSAL REPLAT MCR: 433-09 302-24-363 1
MISTY MATE MCR: 996-39 302-24-426 1
ARIZONA CORPORATE PARK NORTH LOT 1-79 TR A MCR: 297-24
ARIZONA CORPORATE PARK UNIT 1 AMD LOTS 1-20 MCR: 268-13
ARIZONA CORPORATE PARK LOTS 1A & 1B MCR: 297-44 302-29-072
MAXIM INTEGRATED MCR: 1207-40 1 302-35-528
555 E ELLIOT COMMERCE CENTER MLD MCR: 1739-41 1A 302-29-978A
ELLIOT COMMERCE PARK MCR: 618-24 302-29-450