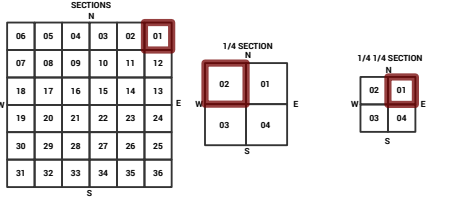
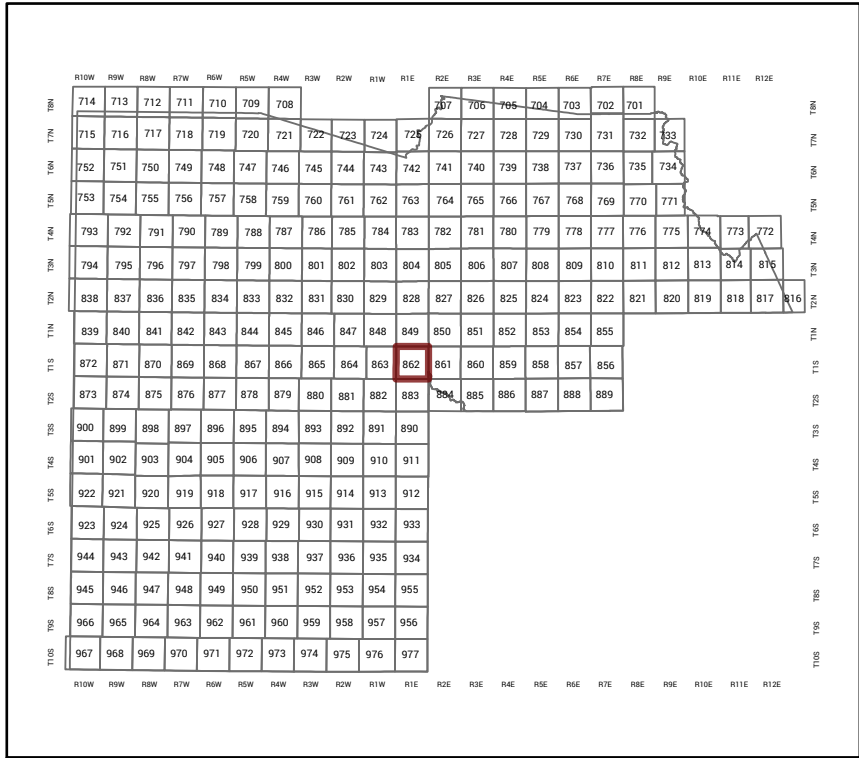


MARICOPA COUNTY
STATE OF ARIZONA

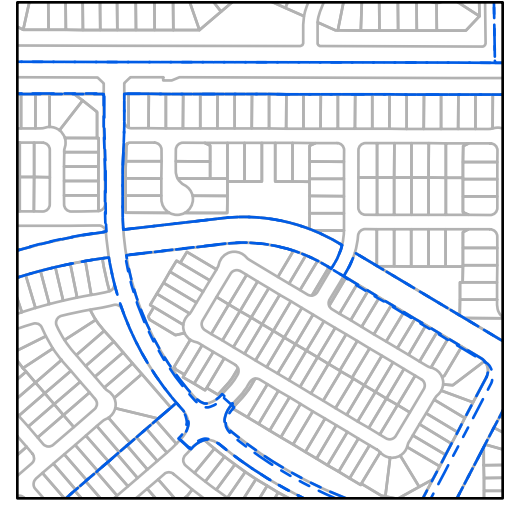
PT. SECTION 1 T01S R01E

862 - 01 - 02 - 01

TOWNSHIP & RANGE SECTION 1/4 SECTION 1/4 1/4 SECTION



Parcels updated within this map



MARICOPA COUNTY
ASSESSOR'S OFFICE
301 W. Jefferson Street
Phoenix, AZ 85003



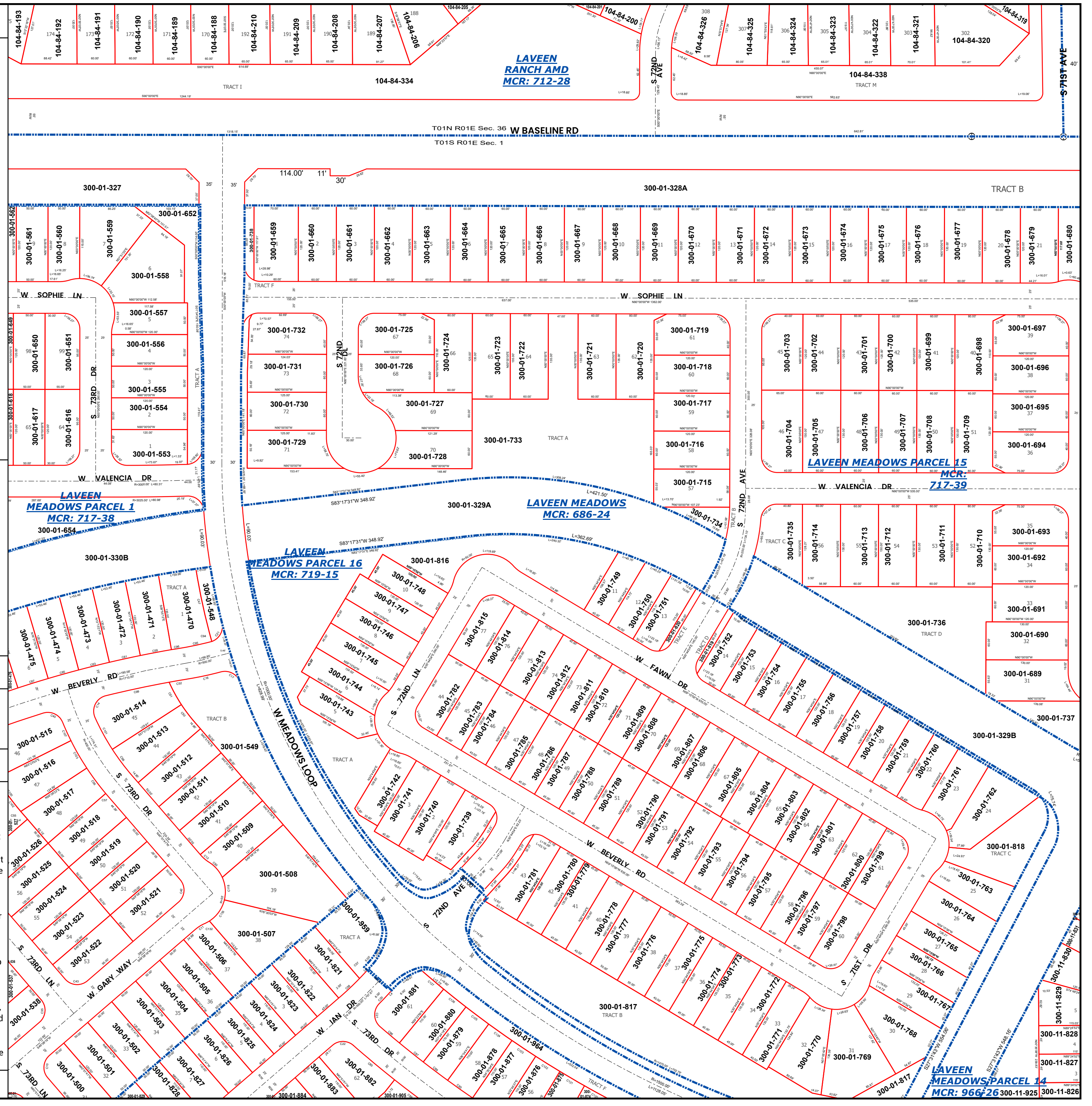
LEGEND: Tax Parcels (red outline), Sections (dashed line), Subdivisions (blue outline), Lots (small red outline), Section Corners (circle with cross), Centerlines (dashed line)

Disclaimer - Indemnification
CAUTION! USERS SHOULD INDEPENDENTLY RESEARCH AND VERIFY INFORMATION WITHIN THIS DATASET OR MAP BEFORE RELYING ON IT.

The Assessor's Office has compiled information within this dataset or map that it uses to identify, classify, and value real and personal property. Please contact the Assessor's Office at 602 506-3406 if you believe any information is incomplete, out of date, or incorrect so that appropriate corrections can be addressed. Please note that a statutory process is also available to correct errors pursuant to Arizona Revised Statutes 42-16254.

The Assessor does not guarantee that any information contained within this dataset or map is accurate, complete or current. In many instances, the Assessor has gathered information from independent sources and made it available within this dataset or map, and the original information may have contained errors and omissions. Errors and omissions may have occurred in the process of gathering, interpreting, and reporting the information. Information within this dataset or map is not updated "real time." In addition, Users are cautioned that the process used within this dataset or map to illustrate the boundaries of adjacent parcels is not always consistent with the recorded documents for such parcels. The parcel boundaries depicted within this dataset or maps are for illustrative purposes only, and the exact relationship of adjacent parcels should be independently researched and verified. The information provided within this dataset or map is not the equivalent of a title report or a real estate survey. Users should independently research, investigate, and verify all information before relying on it or using it in the preparation of legal documents.

Map Reprint Date: 2/28/2026



LAVEEN RANCH AMD
MCR: 712-28

104-84-338 TRACT H

TRACT B

T01N R01E Sec. 36 W BASELINE RD
T01S R01E Sec. 1

300-01-327

300-01-328A

300-01-561

300-01-560

300-01-559

300-01-558

300-01-557

300-01-556

300-01-555

300-01-554

300-01-553

300-01-659

300-01-660

300-01-661

300-01-662

300-01-663

300-01-664

300-01-665

300-01-666

300-01-667

300-01-668

300-01-669

300-01-670

300-01-671

300-01-672

300-01-673

300-01-732

300-01-725

300-01-724

300-01-719

300-01-703

300-01-702

300-01-701

300-01-731

300-01-726

300-01-723

300-01-721

300-01-704

300-01-705

300-01-706

300-01-730

300-01-727

300-01-720

300-01-718

300-01-707

300-01-708

300-01-709

300-01-729

300-01-728

300-01-733

300-01-716

300-01-715

300-01-699

300-01-698

300-01-654

300-01-329A

LAVEEN MEADOWS
MCR: 686-24

LAVEEN MEADOWS
MCR: 719-15

300-01-330B

300-01-816

300-01-748

300-01-749

300-01-735

300-01-734

300-01-474

300-01-473

300-01-747

300-01-746

300-01-815

300-01-750

300-01-751

300-01-736

300-01-737

300-01-475

300-01-476

300-01-745

300-01-744

300-01-814

300-01-752

300-01-753

300-01-738

300-01-739

300-01-476

300-01-477

300-01-743

300-01-742

300-01-813

300-01-754

300-01-755

300-01-739

300-01-740

300-01-514

300-01-513

300-01-741

300-01-740

300-01-812

300-01-756

300-01-757

300-01-740

300-01-741

300-01-515

300-01-514

300-01-739

300-01-738

300-01-811

300-01-758

300-01-759

300-01-741

300-01-742

300-01-516

300-01-515

300-01-738

300-01-737

300-01-810

300-01-760

300-01-761

300-01-742

300-01-743

300-01-517

300-01-516

300-01-737

300-01-736

300-01-809

300-01-762

300-01-763

300-01-743

300-01-744

300-01-518

300-01-517

300-01-736

300-01-735

300-01-808

300-01-764

300-01-765

300-01-744

300-01-745

300-01-519

300-01-518

300-01-735

300-01-734

300-01-807

300-01-766

300-01-767

300-01-745

300-01-746

300-01-520

300-01-519

300-01-734

300-01-733

300-01-806

300-01-768

300-01-769

300-01-746

300-01-747

300-01-521

300-01-520

300-01-733

300-01-732

300-01-805

300-01-770

300-01-771

300-01-747

300-01-748

300-01-522

300-01-521

300-01-732

300-01-731

300-01-804

300-01-772

300-01-773

300-01-748

300-01-749

300-01-523

300-01-522

300-01-731

300-01-730

300-01-803

300-01-774

300-01-775

300-01-749

300-01-750

300-01-524

300-01-523

300-01-730

300-01-729

300-01-802

300-01-776

300-01-777

300-01-750

300-01-751

300-01-525

300-01-524

300-01-729

300-01-728

300-01-801

300-01-778

300-01-779

300-01-751

300-01-752

300-01-526

300-01-525

300-01-728

300-01-727

300-01-800

300-01-780

300-01-781

300-01-752

300-01-753

300-01-527

300-01-526

300-01-727

300-01-726

300-01-799

300-01-782

300-01-783

300-01-753

300-01-754

300-01-528

300-01-527

300-01-726

300-01-725

300-01-798

300-01-784

300-01-785

300-01-754

300-01-755

300-01-529

300-01-528

300-01-725

300-01-724

300-01-797

300-01-786

300-01-787

300-01-755

300-01-756

300-01-530

300-01-529

300-01-724

300-01-723

300-01-796

300-01-788

300-01-789

300-01-756

300-01-757

300-01-531

300-01-530

300-01-723

300-01-722

300-01-795

300-01-790

300-01-791

300-01-757

300-01-758

300-01-532

300-01-531

300-0