

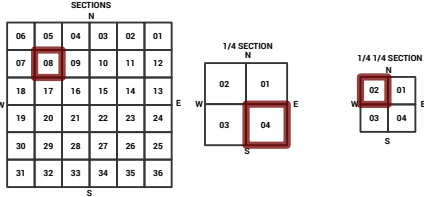
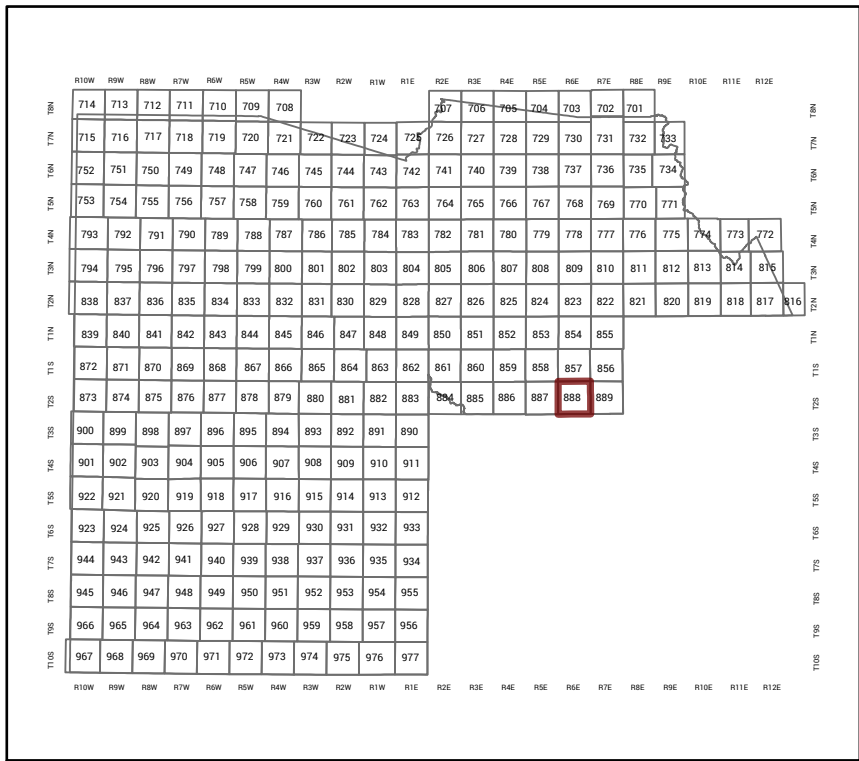
MARICOPA COUNTY

STATE OF ARIZONA

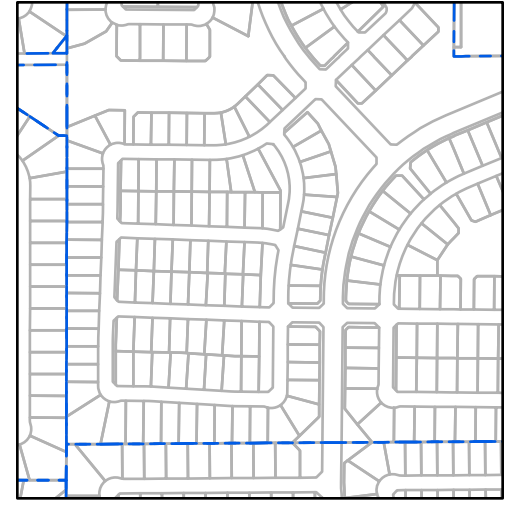
PT. SECTION 8 T02S R06E

888 - 08 - 04 - 02

TOWNSHIP & RANGE SECTION 1/4 SECTION 1/4 1/4 SECTION



Parcels updated within this map



MARICOPA COUNTY
ASSESSOR'S OFFICE
301 W. Jefferson Street
Phoenix, AZ 85003



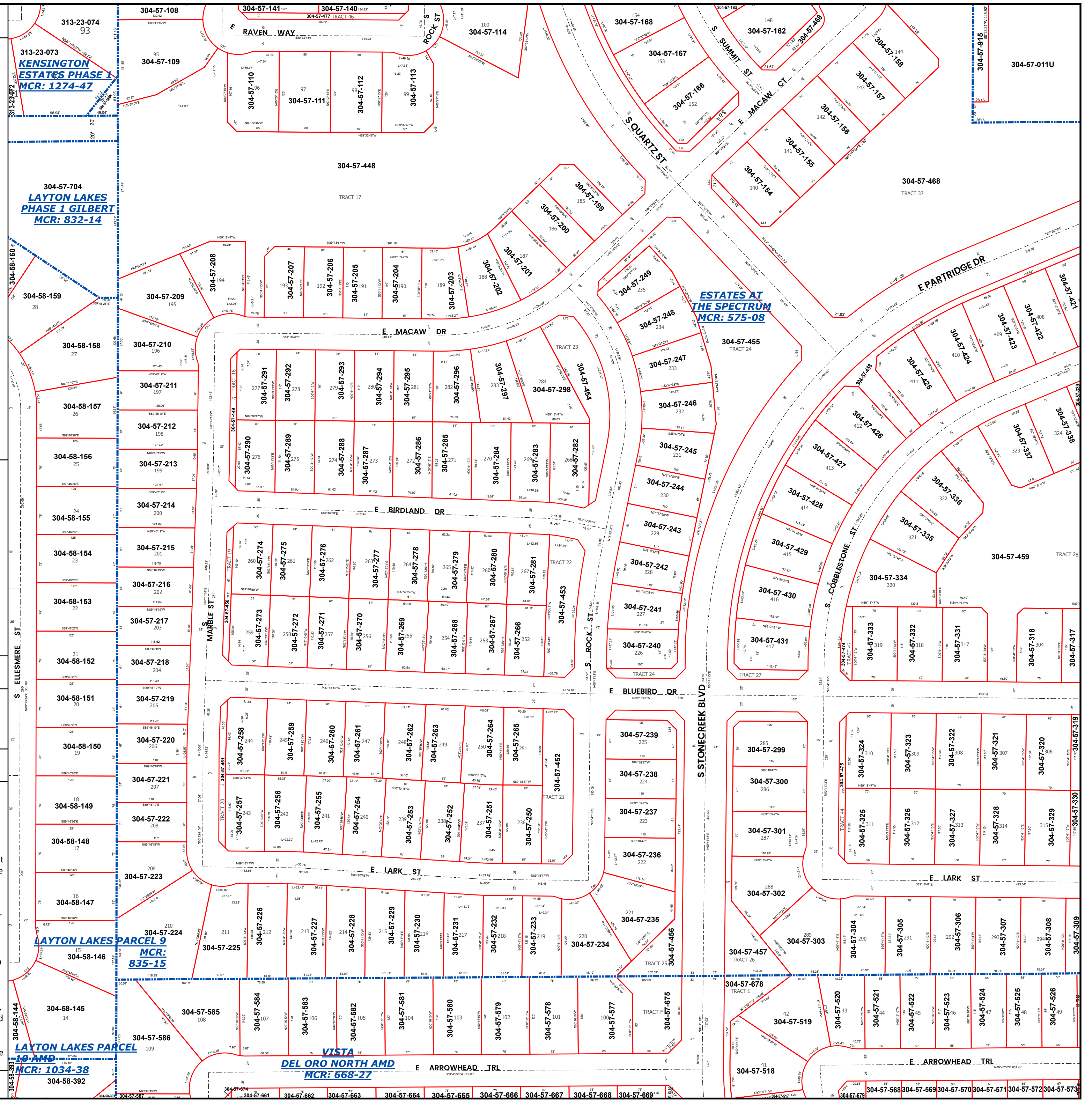
LEGEND: Tax Parcels (red outline), Sections (dotted outline), Subdivisions (dashed outline), Lots (thin red outline), Section Corners (circle with cross), Centerlines (dashed line)

Disclaimer - Indemnification
CAUTION! USERS SHOULD INDEPENDENTLY RESEARCH AND VERIFY INFORMATION WITHIN THIS DATASET OR MAP BEFORE RELYING ON IT.

The Assessor's Office has compiled information within this dataset or map that it uses to identify, classify, and value real and personal property. Please contact the Assessor's Office at 602 506-3406 if you believe any information is incomplete, out of date, or incorrect so that appropriate corrections can be addressed. Please note that a statutory process is also available to correct errors pursuant to Arizona Revised Statutes 42-16254.

The Assessor does not guarantee that any information contained within this dataset or map is accurate, complete or current. In many instances, the Assessor has gathered information from independent sources and made it available within this dataset or map, and the original information may have contained errors and omissions. Errors and omissions may have occurred in the process of gathering, interpreting, and reporting the information. Information within this dataset or map is not updated "real time." In addition, Users are cautioned that the process used within this dataset or map to illustrate the boundaries of adjacent parcels is not always consistent with the recorded documents for such parcels. The parcel boundaries depicted within this dataset or maps are for illustrative purposes only, and the exact relationship of adjacent parcels should be independently researched and verified. The information provided within this dataset or map is not the equivalent of a title report or a real estate survey. Users should independently research, investigate, and verify all information before relying on it or using it in the preparation of legal documents.

Map Reprint Date: 3/1/2026



313-23-074 93
313-23-073
313-23-072
313-23-071
313-23-070
313-23-069
313-23-068
313-23-067
313-23-066
313-23-065
313-23-064
313-23-063
313-23-062
313-23-061
313-23-060
313-23-059
313-23-058
313-23-057
313-23-056
313-23-055
313-23-054
313-23-053
313-23-052
313-23-051
313-23-050
313-23-049
313-23-048
313-23-047
313-23-046
313-23-045
313-23-044
313-23-043
313-23-042
313-23-041
313-23-040
313-23-039
313-23-038
313-23-037
313-23-036
313-23-035
313-23-034
313-23-033
313-23-032
313-23-031
313-23-030
313-23-029
313-23-028
313-23-027
313-23-026
313-23-025
313-23-024
313-23-023
313-23-022
313-23-021
313-23-020
313-23-019
313-23-018
313-23-017
313-23-016
313-23-015
313-23-014
313-23-013
313-23-012
313-23-011
313-23-010
313-23-009
313-23-008
313-23-007
313-23-006
313-23-005
313-23-004
313-23-003
313-23-002
313-23-001

304-57-704
LAYTON LAKES PHASE 1 GILBERT
MCR: 832-14

304-58-160
304-58-159
304-58-158
304-58-157
304-58-156
304-58-155
304-58-154
304-58-153
304-58-152
304-58-151
304-58-150
304-57-221
304-58-149
304-58-148
304-58-147
304-58-146
304-58-145
304-58-144
304-58-392

304-57-224
LAYTON LAKES PARCEL 9
MCR: 835-15

304-57-586
LAYTON LAKES PARCEL 10 AMD
MCR: 1034-38

304-57-108
304-57-109
304-57-110
304-57-111
304-57-112
304-57-113

304-57-448
TRACT 17

304-57-208
304-57-207
304-57-206
304-57-205
304-57-204
304-57-203
304-57-202

304-57-210
304-57-211
304-57-212
304-57-213
304-57-214
304-57-215
304-57-216
304-57-217
304-57-218
304-57-219
304-57-220
304-57-221
304-57-222
304-57-223

304-57-294
304-57-295
304-57-296
304-57-297
304-57-298
304-57-299
304-57-300
304-57-301
304-57-302
304-57-303
304-57-304
304-57-305
304-57-306
304-57-307
304-57-308
304-57-309

304-57-258
304-57-259
304-57-260
304-57-261
304-57-262
304-57-263
304-57-264
304-57-265
304-57-266
304-57-267
304-57-268
304-57-269
304-57-270
304-57-271
304-57-272
304-57-273
304-57-274
304-57-275
304-57-276
304-57-277
304-57-278
304-57-279
304-57-280
304-57-281
304-57-282
304-57-283
304-57-284
304-57-285
304-57-286
304-57-287
304-57-288
304-57-289
304-57-290
304-57-291
304-57-292
304-57-293
304-57-294
304-57-295
304-57-296
304-57-297
304-57-298
304-57-299
304-57-300
304-57-301
304-57-302
304-57-303
304-57-304
304-57-305
304-57-306
304-57-307
304-57-308
304-57-309

304-57-226
304-57-227
304-57-228
304-57-229
304-57-230
304-57-231
304-57-232
304-57-233
304-57-234
304-57-235
304-57-236
304-57-237
304-57-238
304-57-239
304-57-240
304-57-241
304-57-242
304-57-243
304-57-244
304-57-245
304-57-246
304-57-247
304-57-248
304-57-249
304-57-250
304-57-251
304-57-252
304-57-253
304-57-254
304-57-255
304-57-256
304-57-257
304-57-258
304-57-259
304-57-260
304-57-261
304-57-262
304-57-263
304-57-264
304-57-265
304-57-266
304-57-267
304-57-268
304-57-269
304-57-270
304-57-271
304-57-272
304-57-273
304-57-274
304-57-275
304-57-276
304-57-277
304-57-278
304-57-279
304-57-280
304-57-281
304-57-282
304-57-283
304-57-284
304-57-285
304-57-286
304-57-287
304-57-288
304-57-289
304-57-290
304-57-291
304-57-292
304-57-293
304-57-294
304-57-295
304-57-296
304-57-297
304-57-298
304-57-299
304-57-300
304-57-301
304-57-302
304-57-303
304-57-304
304-57-305
304-57-306
304-57-307
304-57-308
304-57-309

304-57-141
304-57-140
304-57-114
304-57-168
304-57-167
304-57-166
304-57-165
304-57-164
304-57-163
304-57-162
304-57-161
304-57-160
304-57-159
304-57-158
304-57-157
304-57-156
304-57-155
304-57-154
304-57-153
304-57-152
304-57-151
304-57-150
304-57-149
304-57-148
304-57-147
304-57-146
304-57-145
304-57-144
304-57-143
304-57-142
304-57-141
304-57-140
304-57-139
304-57-138
304-57-137
304-57-136
304-57-135
304-57-134
304-57-133
304-57-132
304-57-131
304-57-130
304-57-129
304-57-128
304-57-127
304-57-126
304-57-125
304-57-124
304-57-123
304-57-122
304-57-121
304-57-120
304-57-119
304-57-118
304-57-117
304-57-116
304-57-115
304-57-114
304-57-113
304-57-112
304-57-111
304-57-110
304-57-109
304-57-108

304-57-199
304-57-200
304-57-201
304-57-202
304-57-203
304-57-204
304-57-205
304-57-206
304-57-207
304-57-208
304-57-209
304-57-210
304-57-211
304-57-212
304-57-213
304-57-214
304-57-215
304-57-216
304-57-217
304-57-218
304-57-219
304-57-220
304-57-221
304-57-222
304-57-223
304-57-224
304-57-225
304-57-226
304-57-227
304-57-228
304-57-229
304-57-230
304-57-231
304-57-232
304-57-233
304-57-234
304-57-235
304-57-236
304-57-237
304-57-238
304-57-239
304-57-240
304-57-241
304-57-242
304-57-243
304-57-244
304-57-245
304-57-246
304-57-247
304-57-248
304-57-249
304-57-250
304-57-251
304-57-252
304-57-253
304-57-254
304-57-255
304-57-256
304-57-257
304-57-258
304-57-259
304-57-260
304-57-261
304-57-262
304-57-263
304-57-264
304-57-265
304-57-266
304-57-267
304-57-268
304-57-269
304-57-270
304-57-271
304-57-272
304-57-273
304-57-274
304-57-275
304-57-276
304-57-277
304-57-278
304-57-279
304-57-280
304-57-281
304-57-282
304-57-283
304-57-284
304-57-285
304-57-286
304-57-287
304-57-288
304-57-289
304-57-290
304-57-291
304-57-292
304-57-293
304-57-294
304-57-295
304-57-296
304-57-297
304-57-298
304-57-299
304-57-300
304-57-301
304-57-302
304-57-303
304-57-304
304-57-305
304-57-306
304-57-307
304-57-308
304-57-309

304-57-199
304-57-200
304-57-201
304-57-202
304-57-203
304-57-204
304-57-205
304-57-206
304-57-207
304-57-208
304-57-209
304-57-210
304-57-211
304-57-212
304-57-213
304-57-214
304-57-215
304-57-216
304-57-217
304-57-218
304-57-219
304-57-220
304-57-221
304-57-222
304-57-223
304-57-224