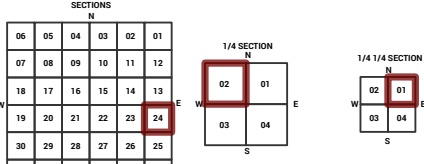
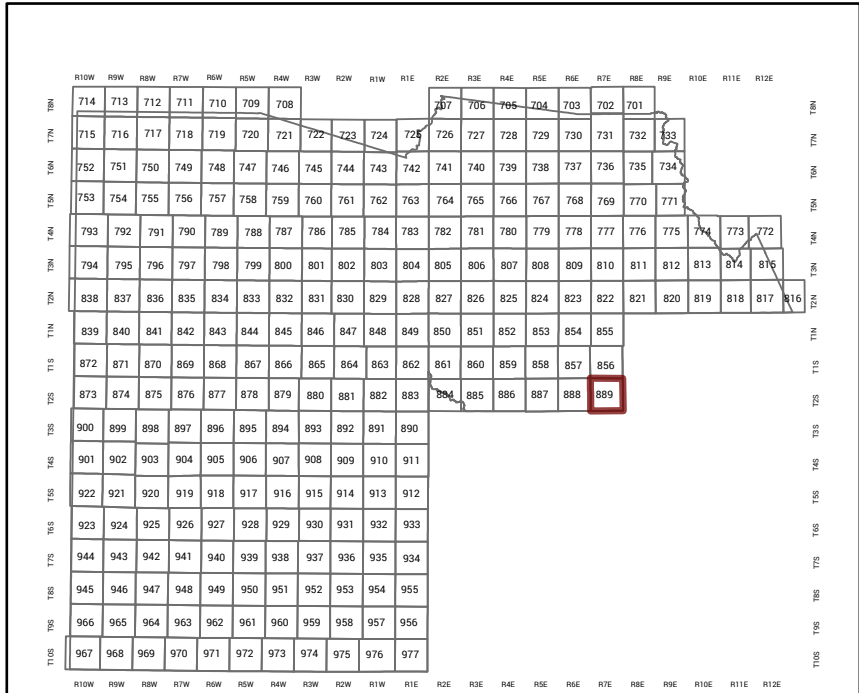


MARICOPA COUNTY
STATE OF ARIZONA

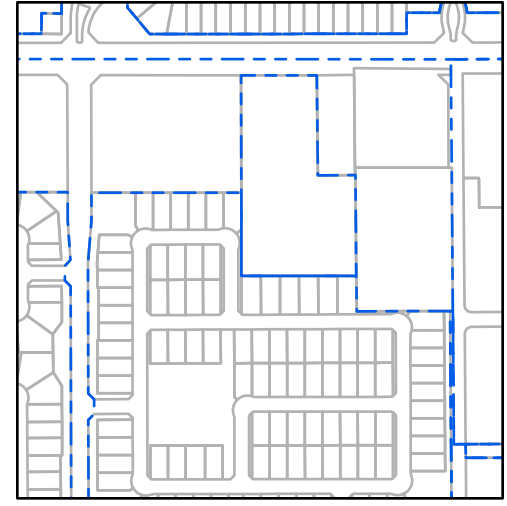
PT. SECTION 24 T02S R07E

889 - 24 - 02 - 01

TOWNSHIP & RANGE SECTION 1/4 SECTION 1/4 1/4 SECTION



Parcels updated within this map



MARICOPA COUNTY
ASSESSOR'S OFFICE
301 W. Jefferson Street
Phoenix, AZ 85003



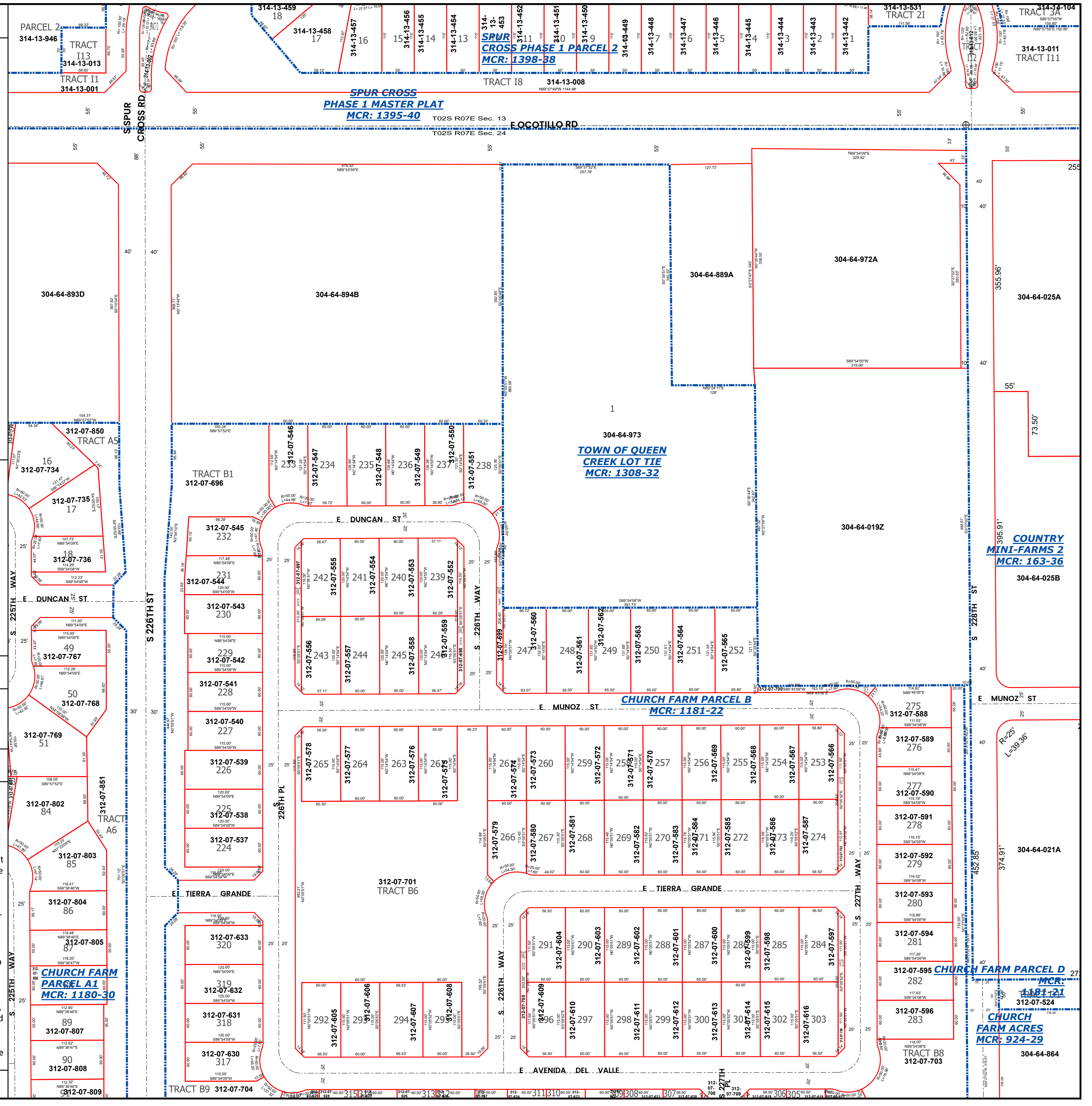
LEGEND: Tax Parcels Sections Subdivisions
Lots Section Corners Centerlines

Disclaimer - Indemnification
CAUTION! USERS SHOULD INDEPENDENTLY RESEARCH AND VERIFY INFORMATION WITHIN THIS DATASET OR MAP BEFORE RELYING ON IT.

The Assessor's Office has compiled information within this dataset or map that it uses to identify, classify, and value real and personal property. Please contact the Assessor's Office at 602 506-3406 if you believe any information is incomplete, out of date, or incorrect so that appropriate corrections can be addressed. Please note that a statutory process is also available to correct errors pursuant to Arizona Revised Statutes 42-16254.

The Assessor does not guarantee that any information contained within this dataset or map is accurate, complete or current. In many instances, the Assessor has gathered information from independent sources and made it available within this dataset or map, and the original information may have contained errors and omissions. Errors and omissions may have occurred in the process of gathering, interpreting, and reporting the information. Information within this dataset or map is not updated "real time." In addition, Users are cautioned that the process used within this dataset or map to illustrate the boundaries of adjacent parcels is not always consistent with the recorded documents for such parcels. The parcel boundaries depicted within this dataset or maps are for illustrative purposes only, and the exact relationship of adjacent parcels should be independently researched and verified. The information provided within this dataset or map is not the equivalent of a title report or a real estate survey. Users should independently research, investigate, and verify all information before relying on it or using it in the preparation of legal documents.

Map Reprint Date: 3/1/2026



PARCEL 2
314-13-946
TRACT I1
314-13-013
TRACT II
314-13-001

**SPUR CROSS
PHASE 1 MASTER PLAT
MCR: 1395-40**

TRACT I8 314-13-008

314-13-531
TRACT 21
TRACT 3A
314-13-011
TRACT I11

304-64-893D

304-64-894B

304-64-889A

304-64-972A

304-64-025A

**TOWN OF QUEEN
CREEK LOT TIE
MCR: 1308-32**

TRACT B1
312-07-696

312-07-850
TRACT A5

312-07-734
16

312-07-736
17

312-07-736
18

312-07-767
49

312-07-768
50

312-07-769
51

312-07-802
84

312-07-803
85

312-07-804
86

312-07-805
87

312-07-807
89

312-07-808
90

312-07-809

312-07-545
232

312-07-544
231

312-07-543
230

312-07-542
229

312-07-541
228

312-07-540
227

312-07-539
226

312-07-538
225

312-07-537
224

312-07-633
320

312-07-632
319

312-07-631
318

312-07-630
317

312-07-607

312-07-608

E DUNCAN ST

E MUNOZ ST

E TIERRA GRANDE

E AVENIDA DEL VALLE

S 226TH WAY

S 227TH WAY

S 228TH ST

E MUNOZ ST

E TIERRA GRANDE

E AVENIDA DEL VALLE

S 226TH PL

S 227TH WAY

S 228TH ST

E MUNOZ ST

E TIERRA GRANDE

E AVENIDA DEL VALLE

S 226TH WAY

S 227TH WAY

S 228TH ST

E MUNOZ ST

E TIERRA GRANDE

E AVENIDA DEL VALLE

S 226TH PL

S 227TH WAY

S 228TH ST

E MUNOZ ST

**COUNTRY
MINI-FARMS 2
MCR: 163-36**

304-64-025B

304-64-021A

**CHURCH FARM ACRES
MCR: 924-29**

312-07-524

304-64-864