

MARICOPA COUNTY

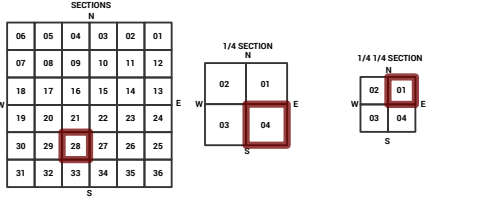
STATE OF ARIZONA

PT. SECTION 28 T02S R07E

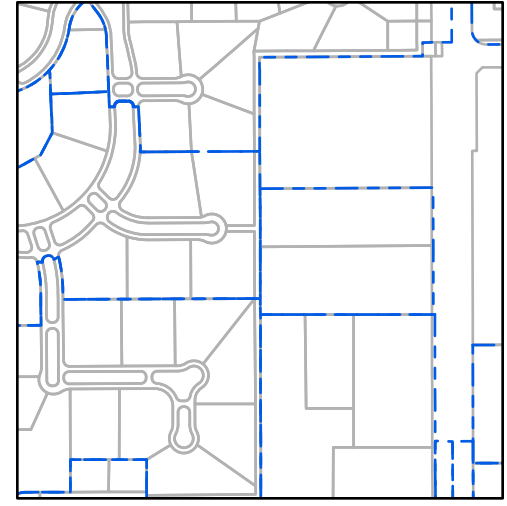
889 - 28 - 04 - 01

TOWNSHIP & RANGE SECTION 1/4 SECTION 1/4 SECTION

714	715	716	717	718	719	720	721	722	723	724	725	726	727	728	729	730	731	732	733	734
735	736	737	738	739	740	741	742	743	744	745	746	747	748	749	750	751	752	753	754	755
756	757	758	759	760	761	762	763	764	765	766	767	768	769	770	771	772	773	774	775	776
777	778	779	780	781	782	783	784	785	786	787	788	789	790	791	792	793	794	795	796	797
798	799	800	801	802	803	804	805	806	807	808	809	810	811	812	813	814	815	816	817	818
819	820	821	822	823	824	825	826	827	828	829	830	831	832	833	834	835	836	837	838	839
840	841	842	843	844	845	846	847	848	849	850	851	852	853	854	855	856	857	858	859	860
861	862	863	864	865	866	867	868	869	870	871	872	873	874	875	876	877	878	879	880	881
882	883	884	885	886	887	888	889	890	891	892	893	894	895	896	897	898	899	900	901	902
903	904	905	906	907	908	909	910	911	912	913	914	915	916	917	918	919	920	921	922	923
924	925	926	927	928	929	930	931	932	933	934	935	936	937	938	939	940	941	942	943	944
945	946	947	948	949	950	951	952	953	954	955	956	957	958	959	960	961	962	963	964	965
966	967	968	969	970	971	972	973	974	975	976	977	978	979	980	981	982	983	984	985	986
987	988	989	990	991	992	993	994	995	996	997	998	999	1000	1001	1002	1003	1004	1005	1006	1007



Parcels updated within this map



MARICOPA COUNTY
ASSESSOR'S OFFICE
301 W. Jefferson Street
Phoenix, AZ 85003



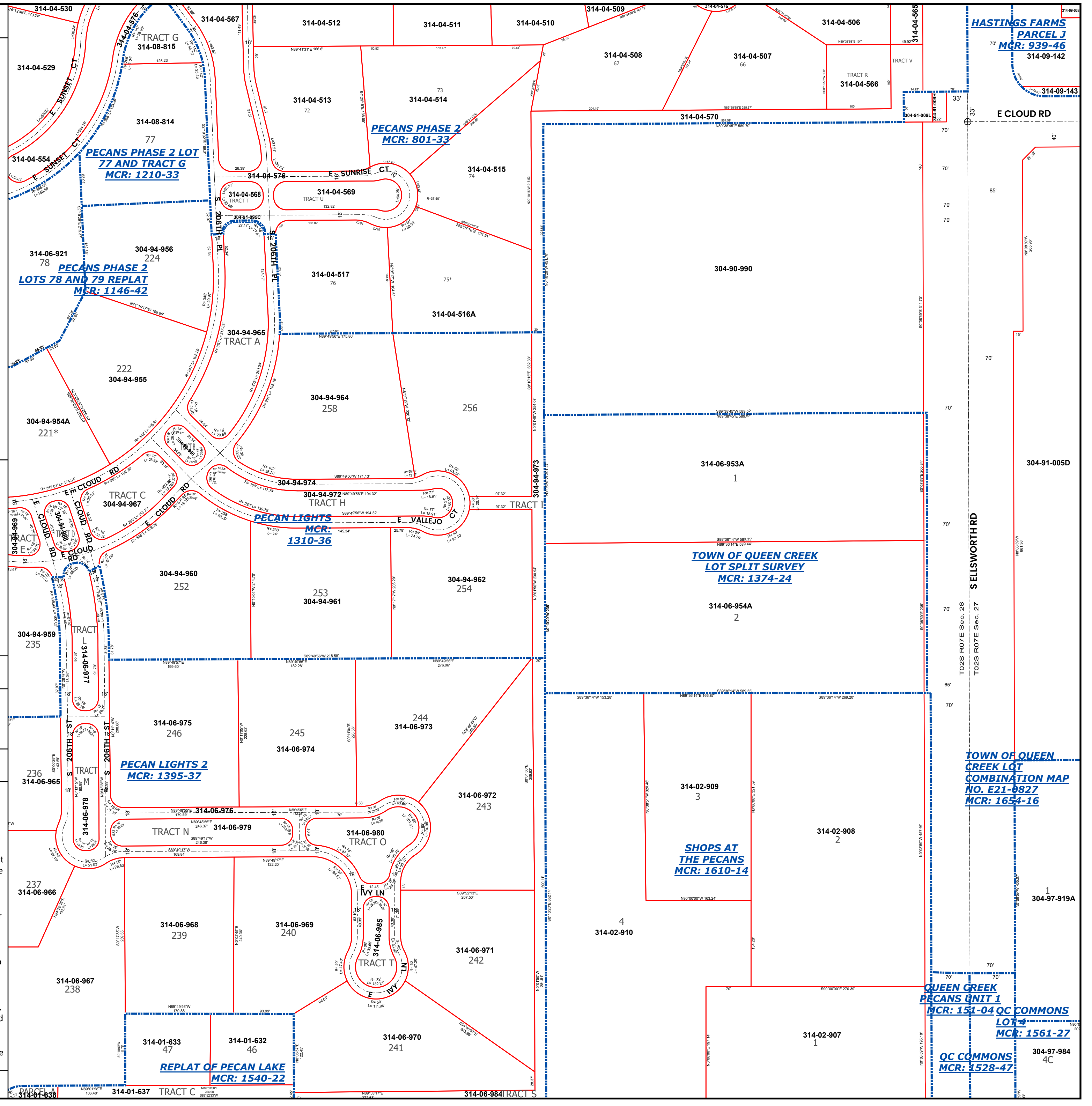
LEGEND: Tax Parcels (red outline), Sections (dotted line), Subdivisions (dashed line), Lots (solid line), Section Corners (circle with cross), Centerlines (dashed line)

Disclaimer - Indemnification
CAUTION! USERS SHOULD INDEPENDENTLY RESEARCH AND VERIFY INFORMATION WITHIN THIS DATASET OR MAP BEFORE RELYING ON IT.

The Assessor's Office has compiled information within this dataset or map that it uses to identify, classify, and value real and personal property. Please contact the Assessor's Office at 602 506-3406 if you believe any information is incomplete, out of date, or incorrect so that appropriate corrections can be addressed. Please note that a statutory process is also available to correct errors pursuant to Arizona Revised Statutes 42-16254.

The Assessor does not guarantee that any information contained within this dataset or map is accurate, complete or current. In many instances, the Assessor has gathered information from independent sources and made it available within this dataset or map, and the original information may have contained errors and omissions. Errors and omissions may have occurred in the process of gathering, interpreting, and reporting the information. Information within this dataset or map is not updated "real time." In addition, Users are cautioned that the process used within this dataset or map to illustrate the boundaries of adjacent parcels is not always consistent with the recorded documents for such parcels. The parcel boundaries depicted within this dataset or maps are for illustrative purposes only, and the exact relationship of adjacent parcels should be independently researched and verified. The information provided within this dataset or map is not the equivalent of a title report or a real estate survey. Users should independently research, investigate, and verify all information before relying on it or using it in the preparation of legal documents.

Map Reprint Date: 3/1/2026



HASTINGS FARMS PARCEL J MCR: 939-46
314-09-142
314-09-143

TOWN OF QUEEN CREEK LOT SPLIT SURVEY MCR: 1374-24

TOWN OF QUEEN CREEK LOT COMBINATION MAP NO. E21-9827 MCR: 1654-16

QUEEN CREEK PECANS UNIT 1 MCR: 151-04 QC COMMONS LOT MCR: 1561-27

QC COMMONS MCR: 1528-47

314-09-142
314-09-143
314-09-144
314-09-145
314-09-146
314-09-147
314-09-148
314-09-149
314-09-150
314-09-151
314-09-152
314-09-153
314-09-154
314-09-155
314-09-156
314-09-157
314-09-158
314-09-159
314-09-160
314-09-161
314-09-162
314-09-163
314-09-164
314-09-165
314-09-166
314-09-167
314-09-168
314-09-169
314-09-170
314-09-171
314-09-172
314-09-173
314-09-174
314-09-175
314-09-176
314-09-177
314-09-178
314-09-179
314-09-180
314-09-181
314-09-182
314-09-183
314-09-184
314-09-185
314-09-186
314-09-187
314-09-188
314-09-189
314-09-190
314-09-191
314-09-192
314-09-193
314-09-194
314-09-195
314-09-196
314-09-197
314-09-198
314-09-199
314-09-200