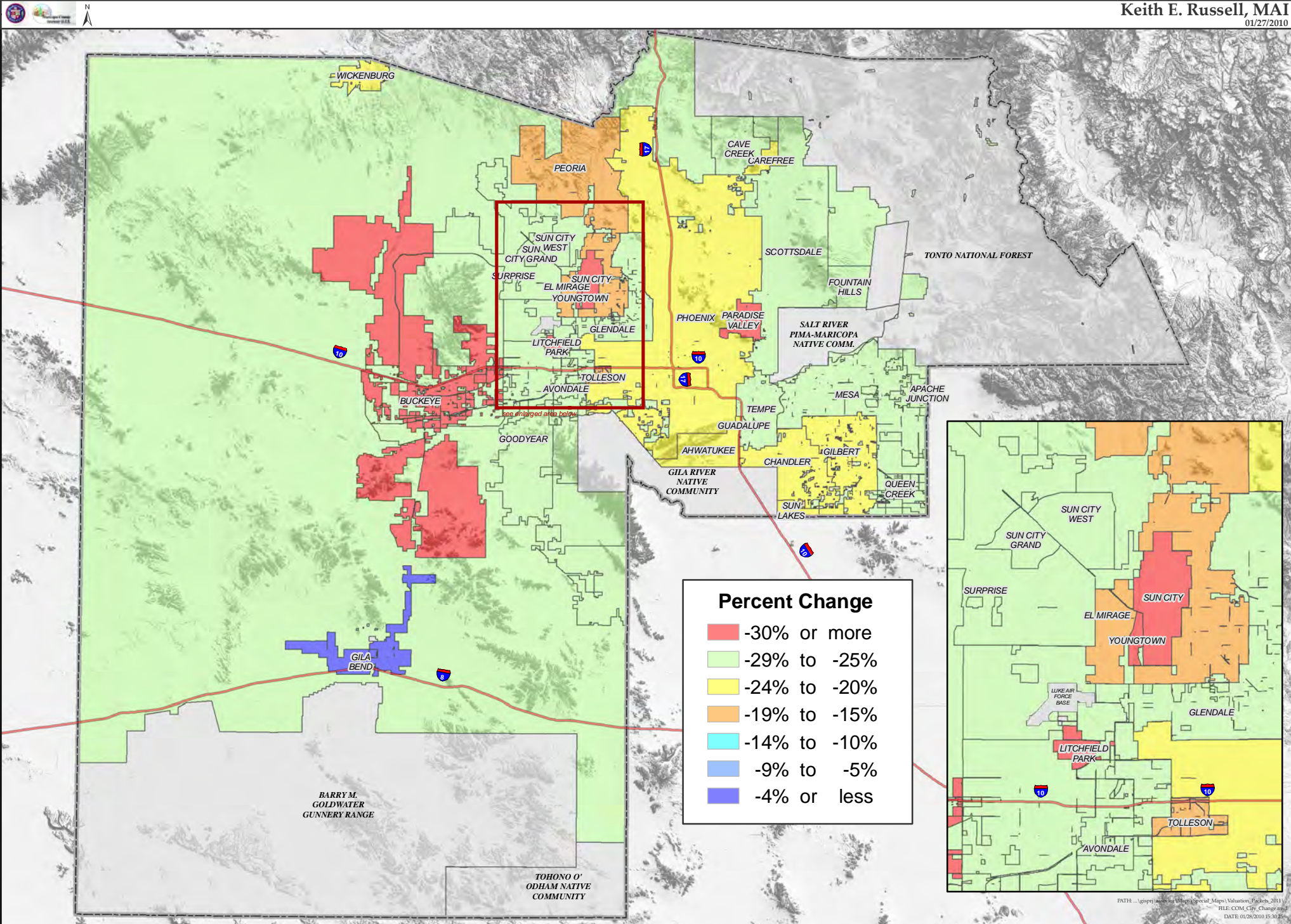


# MARICOPA COUNTY COMMERCIAL FULL CASH VALUE PERCENT CHANGE BY MUNICIPALITY

Tax Year 2011

Keith E. Russell, MAI  
01/27/2010



**Percent Change**

|             |              |
|-------------|--------------|
| Red         | -30% or more |
| Light Green | -29% to -25% |
| Yellow      | -24% to -20% |
| Orange      | -19% to -15% |
| Cyan        | -14% to -10% |
| Light Blue  | -9% to -5%   |
| Dark Blue   | -4% or less  |

