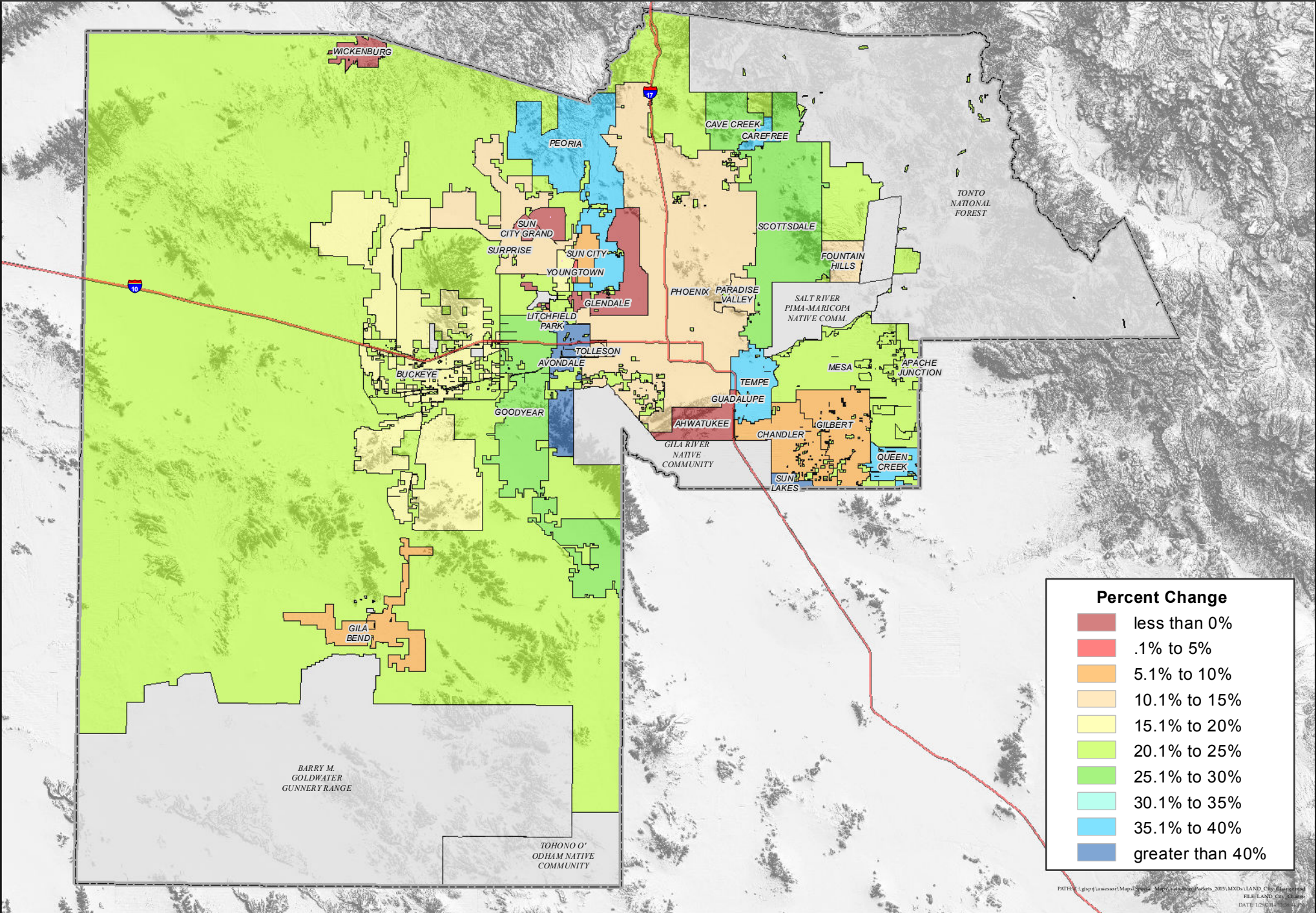


MARICOPA COUNTY VACANT LAND FULL CASH VALUE PERCENT CHANGE BY MUNICIPALITY

Tax Year 2015

Paul D. Petersen



Percent Change	
■	less than 0%
■	.1% to 5%
■	5.1% to 10%
■	10.1% to 15%
■	15.1% to 20%
■	20.1% to 25%
■	25.1% to 30%
■	30.1% to 35%
■	35.1% to 40%
■	greater than 40%